

SCROLL DOWN FOR PROPERTIES



**Lots, Land, Acreage
& Country Estates**

Located between Gainesville,
St Augustine and Ocala.

On the Atlantic side of Florida, 45 min north of Orlando!

**For RV Camping, Mobile Homes or Conventional
Homes!**

For details call (305) 333-7551

100% Seller-Financing

NO DOWNPAYMENT REQUIRED!



Land For Sale by Owner

BUY DIRECT -- NO DOWN PAYMENT REQUIRED!

No Brokers, No Realtors, No Commissions, No Middlemen, No Agents, No Fees,

100% Seller-Financing available with all properties!

Title conveyed for all properties by "Free & Clear" Warranty Deed

Guaranteed Property Exchange Program
Three years to change your mind

Scroll down for updated property inventory for

EASTERN FLORIDA
(Atlantic Ocean side)

To access Western Florida (GULF of MEXICO) and Northern Florida
(PANHANDLE) inventories, just close this screen.

KEEP SCROLLING DOWN TO SEE EASTERN FLORIDA PROPERTIES FOR SALE
NOW YOU CAN BUY FLORIDA LOTS & ACREAGE DIRECTLY FROM THE OWNERS!

100% Owner-Financing!

You deal directly with the seller!

NO DOWN PAYMENT REQUIRED

NO BROKERS, NO AGENTS, NO MIDDLEMEN,

NO REALTORS NO COMMISSIONS

AND YOU GET 3 YEARS TO CHANGE YOUR MIND!

ask about our three-year Buyer Property Exchange **Guarantee**

____ Questions? Call (305) 333-7551

We offer prime lots & acreage throughout Florida

From the Alabama/Georgia line in the north
to the sunny tropics south of Tampa Bay.

SCROLL DOWN FOR SELLER-FINANCED PROPERTIES

F
t

3 Years to Change Your Mind!

ALABAMA GEORGIA PANHANDLE WESTERN FLORIDA EASTERN FLORIDA NORTH ATLANTIC OCEAN

Welcome to **FLORIDA**
THE SUNSHINE STATE

Tallahassee

Continue to **SCROLL DOWN** for Eastern Florida Properties.
(for other properties, close this screen)

The only Florida real estate company offering ...

***Property Exchange Privilege**

Lots & Acreage Available!

CELEBRATING Since 1980 40 YEARS ANNIVERSARY

The Best Deal on Earth is Florida Earth!

For Sale By Owner

Don't worry about your property selection!
Our "Buyers' Property Exchange Privilege" guarantees the right for buyers to exchange properties for any other in our inventory for a period of 3 years!

Signed *Martin I. Price* CEO

Satisfaction Guaranteed Exchange Privilege

*See rules apply to Buyer's whose accounts are in good standing and who wish to apply proceeds paid to a different property. Full guarantee regulations provided upon written request.



Licensed by the State of Florida since 1980



The Price family has been in the land business for 5 generations! Martin Price, is the current CEO of The Realty Connexion. His maternal grandfather, Jacob Kallenberg, managed farms as far back as 1924 in Dade County, Florida (at what is now known as Hialeah). His paternal grandfather, Samuel Price, was developing building lots in Willimantic, CT in 1927. His father, Jack Price, was building motels and other commercial properties in Spartanburg, SC in the 50's and 60's. His Son, Peter, is Senior VP of The Realty Connexion and his grandson, Joseph, is interning with the company, part-time while attending The University of South Florida in Orlando . . . **For info on our CEO, go to www.MartinPrice.info**

. . . and here is what they are saying about The Realty Connexion:

"What I like best about The Realty Connexion is that they give you the original survey plat map and all the info before you purchase and then you can do your due diligence and get 3 years to change your mind and swap to another property."

Nicole Spriggs, Ocala, FL

". . . it is incredible that you can successfully invest in Florida real estate with no money down & no credit check. No qualifying requirement of any kind!"

David Shepard, Denver, CO

". . . when you call them, you get a real live person on the phone who is knowledgeable and answers all your questions."

Lauren Summer, Providence, RI

"They have an inventory of over 100 city lots, acreage parcels and mini farms all over the state of Florida - from Tampa Bay to Panama City Beach and from Tallahassee to St Augustine, AND ALL ARE SELLER-FINANCED with No Money Down required!"

Marco Rodriguez, Boynton Beach, FL

SCROLL DOWN FOR PROPERTY INFORMATION



Want Land?

- For **investing** as it increases in value over time?
- For **camping, hunting, or days at the lake?**
- For **passing it on** to future generations?
- For **home or mobile home** now, or in the future?

Call (800)341-9958, **E-mail** RealEstateOffices@gmail.com, or **Text** (305)333-7551
or scroll down and select the property of your choice & send us your contact info
 and we will send you the **BUYER'S REAL ESTATE PACKAGE** of your choice.

The Best Deal
 on Earth is
 Florida Earth!

- THE BUYER'S REAL ESTATE PACKAGE INCLUDES:**
- (1) Original Survey showing property size & location.
 - (2) Warranty Deed Agreement in your name.
 - (3) Screen shots from the satellite, plus any pictures.
 - (4) Company Brochure, Information & Instructions.
 - (5) 3-year "Due Diligence" Satisfaction Exchange Policy.



E-mail us your contact info and we will hold the property for you and send you the BUYER'S REAL ESTATE PACKAGE with no obligation to purchase or sign anything!

E-Mail the following info to RealEstateOffices@gmail.com

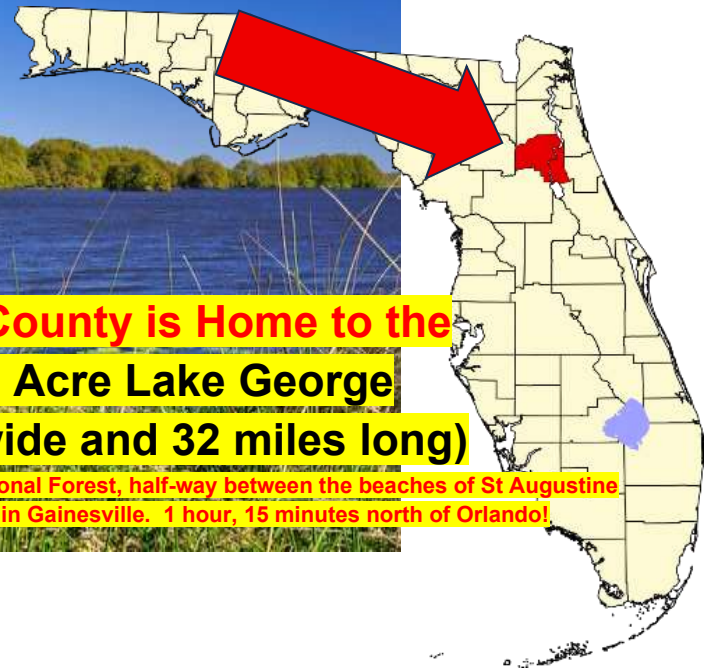
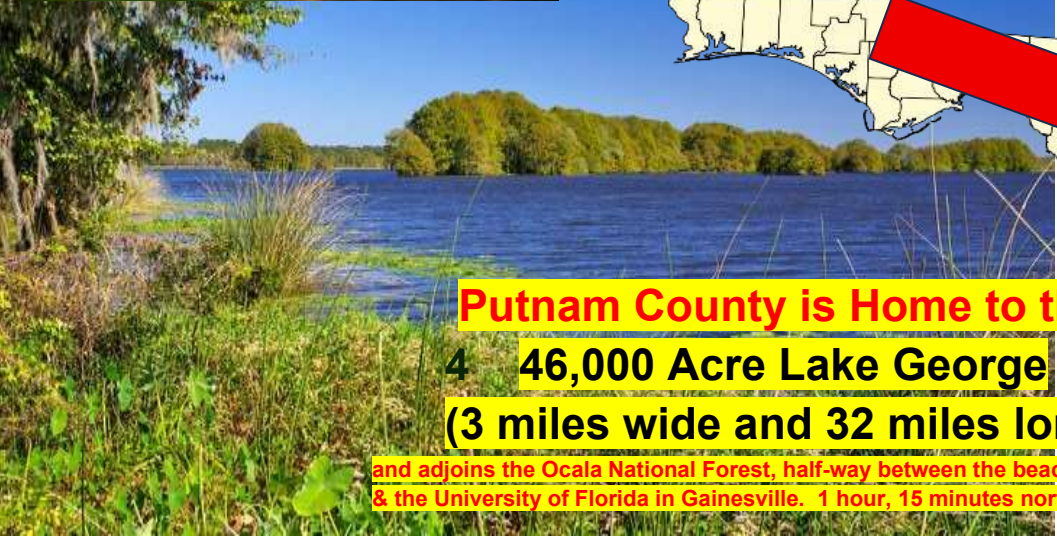
- (1) Your full legal name, (2) Any other name(s) you want on the Warranty Deed, (3) Your E-Mail address,
- (4) Your mailing address (Street, City, State, Zip Code), (5) Your Telephone number (6) The Map Reference for the property you want held in your name. (No Obligation to Purchase). Be sure to include the map reference number of your choice. It is the number in the upper-left hand corner of each property description. It is the letters **PT** followed by 4 numbers.



Eastern Florida

(Atlantic side) Putnam County

NO HOA, NO IMPACT FEES!



**Putnam County is Home to the
4 46,000 Acre Lake George
(3 miles wide and 32 miles long)**

and adjoins the Ocala National Forest, half-way between the beaches of St Augustine & the University of Florida in Gainesville. 1 hour, 15 minutes north of Orlando!

Scroll down for Putnam County properties for sale in 5 different areas:

Hawthorne at the western end of the County (15 minutes to Gainesville).

North County at Interlachen, 15 min west of Palatka, the County Seat, and **due north of Orlando**),

South County at Georgetown, with its **46,000 acre Lake George**. It is adjacent to the St Johns River and the 607 square mile **Ocala National Forest** (with over 600 natural lakes and ponds) only 1¼ hours north of Orlando.

Central County Florahome with its magnificent **850 acre lake**! Great for 4-wheeling (go from sugar sand to thick mud in minutes) explore and go kayaking or canoeing in cold-water springs such as Juniper and Alexander or go hiking, or with mountain bikes. Putnam County has been designated as the most “laid back” County in Florida and its lakes and other amenities are among Florida’s best kept secrets!

Putnam County Seat – Palatka (Including Satsuma). **Palatka is located directly on the St Johns River which is navigable south to the 46,000 acre Lake George and north to Jacksonville and the Atlantic Ocean!** A charming riverside community known for its small-town feel, beautiful parks, and easy access to nearby cities -- **St. Augustine, Gainesville, and Jacksonville**. Families will appreciate the proximity to local schools, including James A. Long Elementary, Jenkins Middle School, and Palatka High School, while everyday conveniences are close at hand with grocery stores such as **Winn-Dixie, Save A Lot, and Walmart Supercenter!** The city is noted for its BBQ and seafood restaurants and markets-- as well as Chili’s, Zaxbys, Chinese, Mexican and all the pizza and burger joints!

Outdoor lovers will enjoy fishing, boating, and kayaking along the St. Johns River, exploring Ravine Gardens State Parks scenic trails, motorboating and fishing in the nearby **46,000 acre Lake George** and hunting in the adjoining **Ocala National Forest!**

**TINY HOMES, MOBILE HOMES, MOTOR HOMES,
CONTAINER HOMES, RVs, CAMPING TRAILERS
ARE ALL ALLOWED IN PUTNAM COUNTY!
NO HOA!**



Interlachen, Florida

Dreaming of owning your very own piece of Florida land? Dream no further. We have incredible opportunities for you.

Large vacant lots nestled in the secluded part of Interlachen, Florida. You'll be greeted by breathtaking views of the lush greenery and the warm Florida sunshine! It's the perfect location to set up your campsite, build your dream home and create a private retreat away from the hustle and bustle of city life.

But that's not all. With ample space, you can indulge your green thumb and create your very own backyard garden oasis. Picture yourself growing your own fresh fruits, vegetables, and flowers. You can enjoy the satisfaction of cultivating your own organic produce or simply relax in the shade of your favorite trees. Located in Interlachen, Florida, these secluded properties offer a peaceful and idyllic setting. You'll be able to escape the noise and stress of the city while still being close enough to enjoy the conveniences and amenities it has to offer. Whether you're looking for a weekend getaway or a permanent residence, all of our properties provide the perfect balance of privacy and accessibility.

Investing in land can be a smart and lucrative decision. Not only does it give you a sense of ownership and freedom, but it also holds immense potential for future value appreciation. By securing a vacant lot now, you're not just acquiring a piece of land - you're investing in your future and creating a legacy for generations to come.

Seize this golden opportunity and make your dreams come true. The possibilities are endless with a vacant lot in Interlachen, Florida. Don't let this chance slip away - act now and secure your piece of paradise.

Property Details

LOCATION: Putnam County, Florida. Closest Town is 7 miles to the village of Interlachen, 19 miles to Palatka (County Seat). 35 miles to Gainesville (University of Florida). 51 miles to St. Augustine Beach (Oldest City in the United States). 1 hour, 45 mins to Orlando. 7 miles to gas station, grocery store and hardware store. 16 miles to Walmart. 19 miles to regional hospital. **No HOA - No credit check.**

We believe that it's important that our customers are happy with the property they choose and that is why we offer **No Money Down, Seller-Financing and a 3- year property exchange **Guaranteed**, period of due diligence.**

To find your property -- put it on google maps, or your GPS, or just call us at (305) 333-7551.

PT 2494 --- .85 Acres @ Harwood Street & Meadow Drive Georgetown, FL

LEGAL: Lake George Manor MB5 P24, Area G, Lot

Less than 5 minutes to the 46,000 acre Lake George!

Total Price only \$23,900 -- Choose NO DOWN PAYMENT and \$995 Per Mo for 24 months , or \$459 Per Mo for 60 months, or \$349 Per Mo for 96 months or \$299 Per Mo for 120 months!

PT 2494

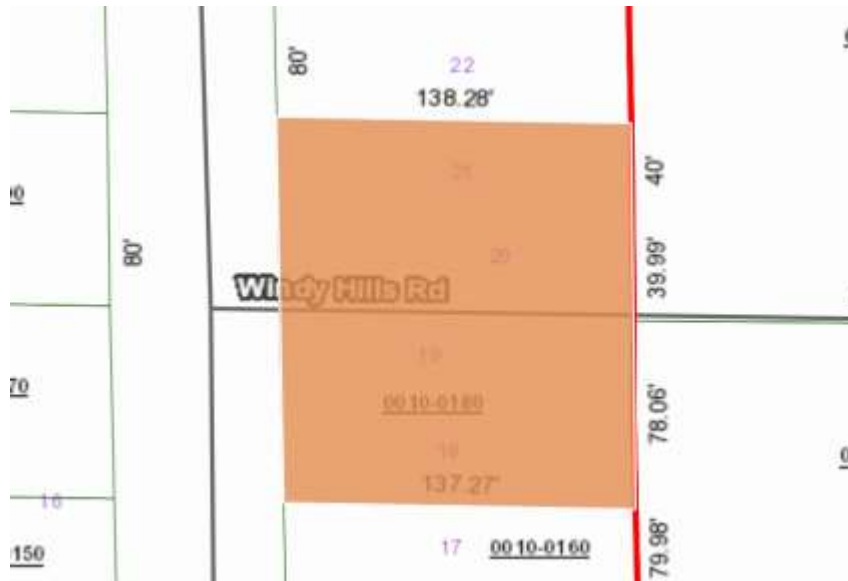


PT 2201 -- Two 80 x 138 ft lots across the street from each other at the intersection of Windy Hills Road and Maryland Avenue! (Address 330 Maryland Ave, Hawthorne, FL 32640). \$16,900 each, NO MONEY DOWN and only \$214 per mo each

Hawthorne, Florida is on the west side of Interlachen Lake Estates and about a half-hour from Gainesville and the Univ of Florida!

Or save \$4,000 and take them both (over ½ Acre) for only \$29,800, \$339 per mo

Each lot is over ¼ acre!



PT 2218 -- Michael Ave, Interlachen Lakes (Unit 16, Blk 132, Lot 27)



75 x 125 ft lot located on west side of Michael Ave, 675 ft north of Elizabeth Street, Interlachen Lakes Estates (as



\$10,500, No Money Down, Only \$129 per month

PT 2202-B

3928 Main Street, Hawthorne, FL 32640

(a 78' x 110 ft building lot) located on the north side of Main Street, 260 feet east of Baden Powell Road. Only 15 minutes from the Town of Hawthorne.

LOCATION, LOCATION, LOCATION!

Baden Powell Road is a main, paved road leading directly to SR20 (a 4-lane highway) and then right to Gainesville, FL, and the Univ of Florida

\$18,900, \$0.00 Down, \$219 Per Mo



PT 2307 Walker Trail - Interlachen, FL - 75 x 130 ft

Located on the east side of Walker Trail, 213 ft south of Donovan Ave, as shown on the map to the right. This quarter Acre building site is conveniently located just 20 min E of the University of Florida in Gainesville and a half hour W of St. Augustine.



PT2601 - Gloria Avenue, Grandin Lake Shores, Interlachen, FL

Located on Gloria avenue, this 75 x 125 ft lot (0.22 acres) is 450 ft north of Kin St on west side. (see map one page below and picture of lake 2 pages below). Beautiful building site, mobile home site, or for RV camping, just east of 400 acre Grandin Lake!!

\$10,500, \$0.0 down, \$129 per month







400 Acre - Grandin Lake

Georgetown, FL

The following 6 building lots & mobile home sites are located in Georgetown, Florida, at Georgetown Cove, providing direct, on-site access to the incredible **46,000 ACRE LAKE GEORGE** which is bordered by the 600 SQUARE MILE OCALA NATIONAL FOREST. All have electric service avail and excellent road access!

Enter some of the following addresses in Google Maps and navigate down to street level – and look around!



This 46,000 Acre Lake at Georgetown, FL is 3 miles wide & 36 miles long!

WELAKA - GEORGETOWN, FL

Halfway between the cities of Palatka and Deland in the northeast part of Florida lies the small town of Welaka. It sits on the east bank of the world-renowned St. Johns River and can be a challenge to find. But you'll definitely know when you're in Welaka once you feel like you've time-traveled back to old-world Florida with its back streets shaded by lush oak trees and beautiful historic buildings.

Today, WELAKA - GEORGETOWN remains a quiet resort town and an open secret among bass anglers. With access to St. Johns River and the springs and streams that feed this great river, it's a fantastic and pristine destination to enjoy some challenging fishing. And because fishing is a way of life in this town, you won't have a hard time looking for a charter or boat rental or even boat repair shops and services. So if you're ready for the bass fishing experience of a lifetime, head south of Jacksonville and find your way around the town.

Welaka Fishing

Fishing in Welaka means having the banks and tributaries of the great St. Johns River right on your very doorstep. This is significant as St. Johns River is one of the most legendary bodies of water running through Florida. It's the longest one in the state and is considered its most important river for recreational and commercial purposes. It is one of the country's most unique as it flows up north. As an ancient body of water, it has nurtured a diverse set of flora and fauna and has helped build up numerous communities and cities through which it flows.

Lake George or Lake Welaka, one of the biggest tributaries of St. Johns River flows through the town. It is the second-largest lake in the state, next to Lake Okeechobee. The lake itself is vast, shallow, and brackish, with enough salt in the waters to make it conducive for marine species such as blue crabs and fish species such as the **Atlantic stingray, striped bass, sunfish, largemouth bass, and mullet**.

There are many great points to fish Lake George and many of them are easily accessible from Welaka. One is Nine Mile Point, a fishing spot that's less than an hour away from town. This is the most popular area to fish Lake George, as it has miles of shorelines where you can fish. The eastern stretch of the lake, on the other hand, offers structure and is protected from the wind, so it's a breeze to fish in the area. The western part of the lake may be quite productive and has many creeks where you can enjoy fishing for striped bass, largemouth bass, **black crappie**, and sunfish.

Ocklawaha River is St. Johns River's largest tributary, its main body of water and drainage basin spanning the counties of Marion, Putnam, Orange, Alachua, and Lake. Its waters have a naturally rapid flow, but experts have pointed out that the Rodman Dam slowed down its flow which caused and continues to cause the proliferation of aquatic weeds in the waters of the river.

You can access the river via Highway 40 near Silver Springs and Highway 316 near Eureka. In the parts of the river that offer vegetation and underwater structure, there's plenty of largemouth bass fishing to be had. Downstream of Rodman Dam, you can target **channel** and **white catfish**.

Ocala National Forest is a seven-mile drive from Welaka and is a fantastic destination filled with many fishing spots. It has a unique old-world charm and serves as a rich habitat for diverse wildlife including ospreys, alligators, and even American bald eagles. Best of all, it is home to more than 600 rivers, lakes, and ponds, many of which offer great fishing. Some of the species you can catch here include largemouth bass, **bluegill**, redear sunfish, **warmouth**, and black crappie. The best bodies of water to fish in Ocala? The Rodman Reservoir is one. It is most known for its healthy fish population and its trophy bass. When fishing in the reservoir, look out for vegetation such as eelgrass and lily pads. Use Carolina-rigged worms when targeting bass and **troll** with live minnows when fishing for panfish. Doe Lake and Orange Lake are still two more bodies of water you must fish in the forest. Orange Lake, for one, is vast at 13,000 acres. It has a fishing pier but you can launch a boat in the lake to target bluegill.

Top 10 Fish Species in Welaka-Georgetown, FL

The top 10 fish species to target in Wekala, FL include **largemouth bass, striped bass, sunfish, bluegill, black crappie, white catfish, channel catfish, mullet, shad, and warmouth**.

Seasonal Fishing

Fishing in Welaka, as in the rest of Florida, is productive all year round, with fish active and biting no matter what time of the year. The best time to fish the area now depends on what fish species you're targeting. Crappie and other panfish are available all year round, though they are best caught during winter and early spring when they're spawning. So are largemouth bass, though their activity is highly dependent on rain and weather. Around spring, they can be found in shallow waters for their spawning season. Adult bluegill and redear sunfish can be targeted in the deeper waters during summer.

March, 2026 -- NEWS

Bass Pro Shops acquires over 3,000 acres on the St Johns River in Welaka-Georgetown for future development as a fishing and Branson style resort area!

PUTNAM COUNTY, Fla. — Welaka is a town of 717 people, one traffic light, and access to the St. Johns River.

And now, [Welaka](#) Mayor Jamie Watts has confirmed Bass Pro Shops is indeed going to build in and near his small town.

"It is a reality. It is a reality for Welaka," Watts told First Coast News. Welaka sits just south of Palatka in Putnam County.

"It's going to obviously be some sort of resort. It's not going to be a Bass Pro Shops store," Watts said.

Bass Pro Shops has resorts, such as the Big Cedar Lodge in Missouri. One night's stay in the cheapest room there runs almost \$300 this summer. Watts calculated how much land Bass Pro Shops has bought in Putnam County.

Pulling out a map, Watts said, "If you look at the size of the town here in orange, and then you look at the land that's been acquired, this is larger than the town of Welaka." The size of the town on the map was a fraction of the size of the land Bass Pro Shops had acquired.

Experts say: ... "Land prices will be increasing accordingly, and that now is the time to invest in land in the Welaka – Georgetown area (Georgetown

Cove & Lake George Manor) located between the St. Johns River and the 46,000 acre Lake George”

THE NEXT 6 PROPERTIES BELOW ARE WITHIN 2 to 5 MINUTES OF THE 46,000 ACRE LAKE GEORGE AND THE ST JOHNS RIVER!

Lake George Manor, at Georgetown Cove is a charming area located in Welaka-Georgetown. This tranquil community offers residents the perfect blend of serene surroundings and modern amenities. Situated at the picturesque **Lake George, which at 46,000 acres (3 miles wide and over 30 miles long)** is the largest natural lake in Florida where residents can enjoy various activities such as RV camping, boating, fishing, water-skiing and kayaking. The neighborhood of Lake George Manor boasts beautiful single-family homes with spacious yards, perfect for families looking for a peaceful place to call home.

The community is known for its friendly atmosphere and community spirit, making it an ideal place to raise a family or enjoy a relaxing environment in this waterfront community!

With easy access to nearby shops and restaurants at Walaka, Crescent City and Palatka and recreational facilities at the **adjoining 600 sq mile Ocala National Forest,** Lake George Manor offers the best of both worlds, a quiet rural lifestyle with urban conveniences just a short drive away. It's a tranquil retreat in the heart of Florida, **just 1½ hours north of Orlando, between St Augustine and Gainesville,** Lake George Manor, Georgetown, FL is the perfect place to settle down and enjoy all this beautiful waterfront region has to offer.

**PT 2407 -- 136 1st St.
Georgetown, FL.**

77' x 134 ft bldg or mobile home lot just off Georgetown-Denver Rd, north side, 150 ft west of Georgetown Drive. With access to 46,000 acre Lake George!

\$16,500, \$0.00 Down, \$189 mo.



PT 2409 -- 105 E Boundary Drive, Georgetown, FL 32139



Sale Pending Yale

75' x 116 ft bldg site in Paradise Lakes, Unit 1, Blk 6, Lot 27 (High & Dry area near the lake!)

LOCATION, LOCATION! Property is ideally located just off Georgetown-Denver Road and backing onto a 20 acre farm - only 5 min to the 46,000 acre Lake George bordering the 600 sq mile Ocala National Forest!
\$16,900, \$0.00 Down, \$189 mo

This approved building site near the lake has excellent road access, & no neighbors looking at your backyard or into your rear windows!

\$18,900, \$0.00 Down, & only \$239 per mo

**PT 2236 -- 148 Ferncreek Drive, Georgetown .37 acres (80 x 200 ft) secluded area!
NICE, OVERSIZED, WOODED LOT NEAR THE 46,000 acre Lake George!
ONLY \$21,900, \$0.00 Down and \$239 per month!**



Commented [MP1]:

This is George's Lake at Florahome

Enjoy fishing, swimming, boating and all water sports!

850 Acre George's Lake

All of the Florahome properties below are either within walking distance



or a two minute drive to this 850 acre George's Lake for swimming, fishing, water skiing and all aquatic recreation!

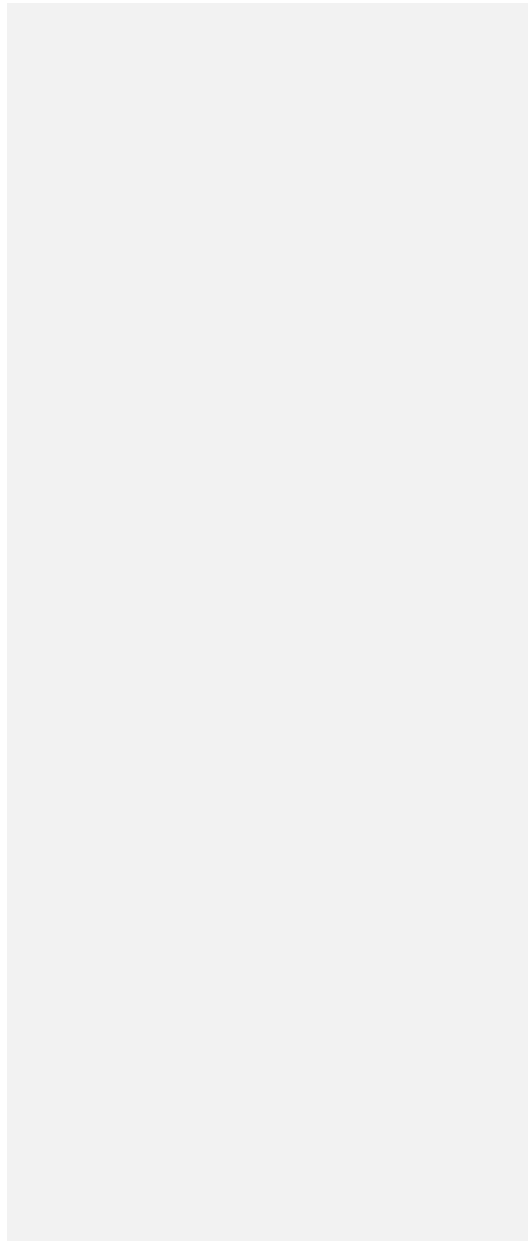
Florahome is in central Putnam County, and is uniquely located north of Orlando, west of St Augustine on the Atlantic Ocean, east of Gainesville, and south of Jacksonville.

**PT 2502 -- 113 East Drive, Florahome, FL (at George's Lake)
(Lakeside Hills Sec 6, Blk 617, Lot 17) .23 Acre approved
building site at the lake! \$14,900, \$0.00 Down, \$169 month!**

CAMP NOW AT THE LAKE, BUILD LATER IF YOU WISH!



PT 2120 -- 130 Marion Street, Florahome, FL at George's Lake!



\$14,900, \$0.00 Down, \$179 month. *One short block to lake! Scroll down to next page to see special lake access for .23 acre bldg lot at 130 Marion Street!*



PT 2121-C & D 130 and 132 Escambia Drive at George's Lake!

2 adjoining lots, each 75 x 125 ft building lots are each approved for mobile homes. It is a short walk to the lake for fishing, swimming, waterskiing, jet skiing, and all other water sports. **LAKESIDE HILLS SEC 6 MB4 P143, BLK 615 LOT 6**

\$14,900 ea , \$0.00 down, \$169 per mo ea

Or take both the adjoining lots for \$24,900, \$0.00 down, \$299 mo and save \$4,900!



PT 2102 105 Quartz Drive, Florahome

This property is **only a few steps to the 850 acre George's Lake!** Enjoy fishing, boating, water-skiing, swimming! Good road access and electric readily available.

\$ 14,900, \$0 Down, \$189 mo

850 acre GEORGE'S LAKE

Just a 2-minute walk to the 850 acre George's Lake!



PT 2403

215 Suge Lane, Florahome

What a deal! Camping at the Lake! Own the lot for less than RV lot rental.

75' x 100 ft

\$10,500, \$0.00 Down, \$129 Mo

PT 2403 is near this 850 acre lake for fishing, boating, swimming! Build or establish RV campsite



33



PT 2208 - 306 Flora Dr
75 x 100 ft LAKE ACCESS lot is
 only 3 very short blocks to the
 850-acre George's Lake for
 swimming, fishing,
 powerboating, jet-skiing, etc. A
 one-of-a-kind property being
 offered at only
\$12,500, \$0.00 Down, \$139 Mo



PT 2203 & 2204 --- 128 & 130 E. Lura Lane, Florahome, FL

2 adjoining lots totaling 150' front x 125 feet deep to rear. (.43 Acres)

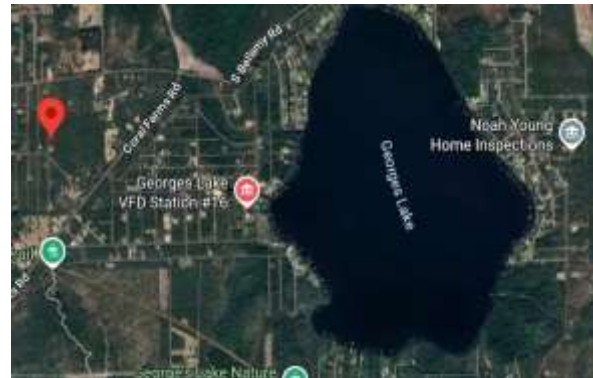
Location is: 29.79664, -81.87649 and is located on the East side of Lura Ln E., 225 ft north of residence at 138 Lura Ln E., Florahome, FL, just minutes from the 850 Acre George's Lake! **Sale Pending - Butler**



Scroll down for another page of maps and pictures

These 2 adjoining lots at 128 & 130 Lura Ln E. (minutes from the lake) are specially priced at only \$12,500 each \$0.00 Down and \$149 mo.

Or save over \$3,000 and get them both for only \$21,900, \$0.00 Down and only \$239 mo



PT 2103

111 Quartz Dr, Florahome

Just steps from 850 Acre George's Lake

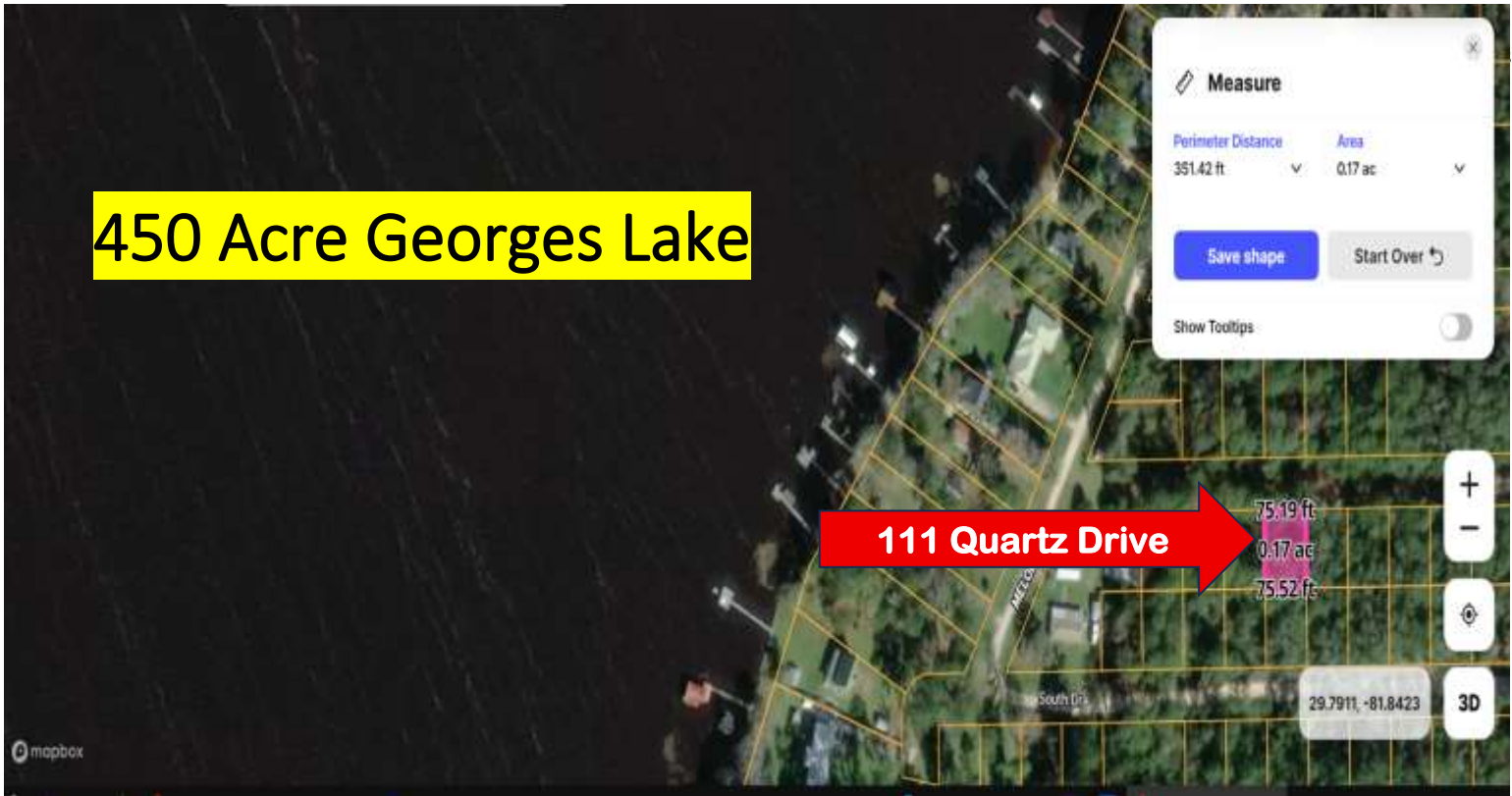
75 x 100 ft lot with Access to George's lake is

\$12,500, \$0.00 Down, \$149 Mo



© 2023 BERKLEY REALTY, INC.

450 Acre Georges Lake



PT 2117 & PT 2117A

Property backed by FL wilderness on 2 sides.

101 and 103 Rosewood Rd, Florahome, FL

142 ft road front by 113 ft deep

0.37 acres \$12,900 ea, \$149 Mo each or save \$6,300

And get both adjoining lots for only:

\$21,900, \$0.00 Down, \$239 Mo

ALSO available PT 2118 (Sec 4A, Blk 3, Lot 4)

just 60 ft to the south \$10,500, \$0.00 Down, \$129 Mo



850-acre George's Lake is fully accessible for boating, fishing, swimming, water-skiing, and jet-skiing - and its only less than 5 minutes away!

PT 2108 321 Rainbow Drive, Florahome, FL \$119 month

Perfect ½ Acre nicely wooded site for RV or primitive tent camping with excellent road access and only steps to the 850 acre George's Lake for fishing, swimming, boating and all water sports! Property located at end of Rainbow Drive, as shown below. \$8,950, \$0.00 Down, \$119 month

THIS PROPERTY FOR RV CAMPING ONLY! NOT APPROVED AS A BUILDING SITE!



**For more information on any property,
just call (305) 333-7551, 8 am - 6 pm, 7 days**

**You are cordially invited to see our company video,
hosted by Martin Price, the chairman of our company.**

www.FloridaLandWatch.com

**Watch video and get \$500 to \$2,500 discount off any
property on this website**